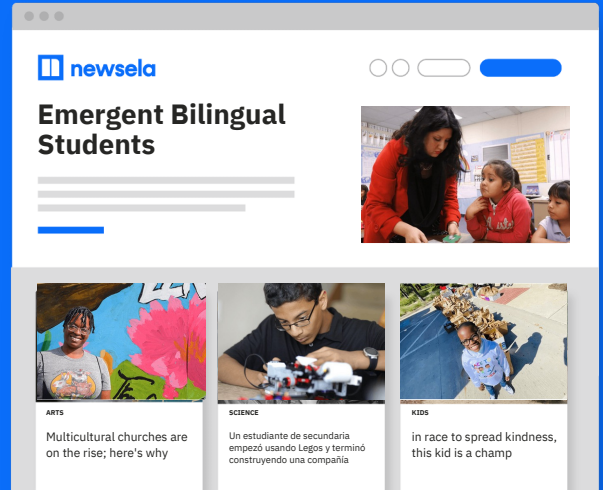


Newsela for Emergent Bilingual Students in Texas

Closing the reading engagement gap for all students



The need to close the reading engagement gap extends to all students, including emergent bilingual students. Newsela provides resources that integrate culturally relevant content, offer the right level of rigor, and provide student choice - all key to closing this gap - because engaged readers are better learners.

WHY CHOOSE NEWSELA FOR EMERGENT BILINGUAL STUDENTS?

Curated content ensures cultural relevance

Content reflects what studies show - that students need texts that reflect their personal experiences to remain engaged.

- Articles cover a range of interests relevant to students' lives and lived experiences, as well as content from around the country and world, to help them stay motivated.

Differentiated instruction made simple

- With Newsela informational articles published at 5 different reading levels, teachers are empowered to differentiate instruction for emergent bilingual students wherever they are in their English language skills development.
- Teachers have the flexibility to use either texts that are just right for students or texts that are slightly challenging.

Thousands of articles in English and Spanish

- Natively translated articles are available in both English and Spanish to support Spanish-speaking emergent bilingual students with comprehension.
- Students can choose to toggle between English and Spanish and adjust the reading level in either language.

Features that drive student engagement

- Students can select read-aloud mode for fluency and pronunciation.
- Texts help build background knowledge - with writing prompts to support TELPAS.
- Newsela Power Words in Newsela ELA engage students with high utility vocabulary words that facilitate language acquisition in context.

To learn more about how Newsela can help your emergent bilingual students, visit:

newsela.com/about/solutions/for-your-state/texas/

EXPECT MORE FROM YOUR CONTENT



AUTHENTIC

Engage every learner with real-world texts featuring diverse views and people



ACCESSIBLE

Differentiate instruction easily with texts published at 5 reading levels.



CONSTANTLY UPDATED

Keep lessons fresh and relevant, with up to 10 new texts added daily.



ACCOUNTABLE

Get visibility into usage and student performance with built-in activities.

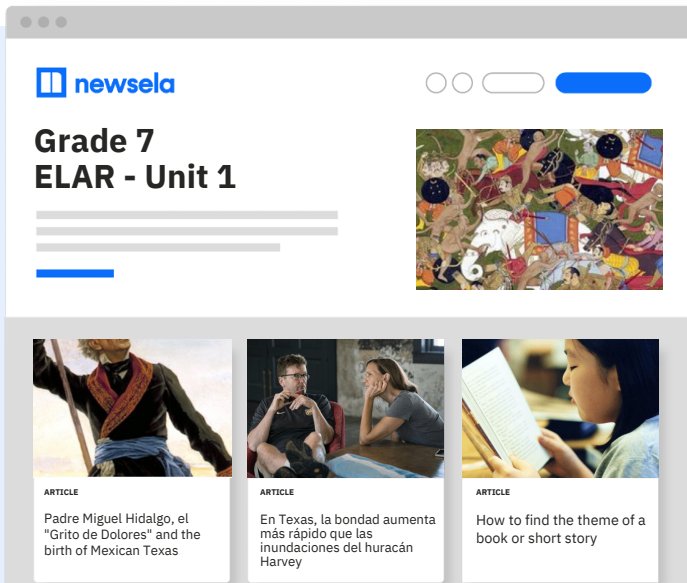
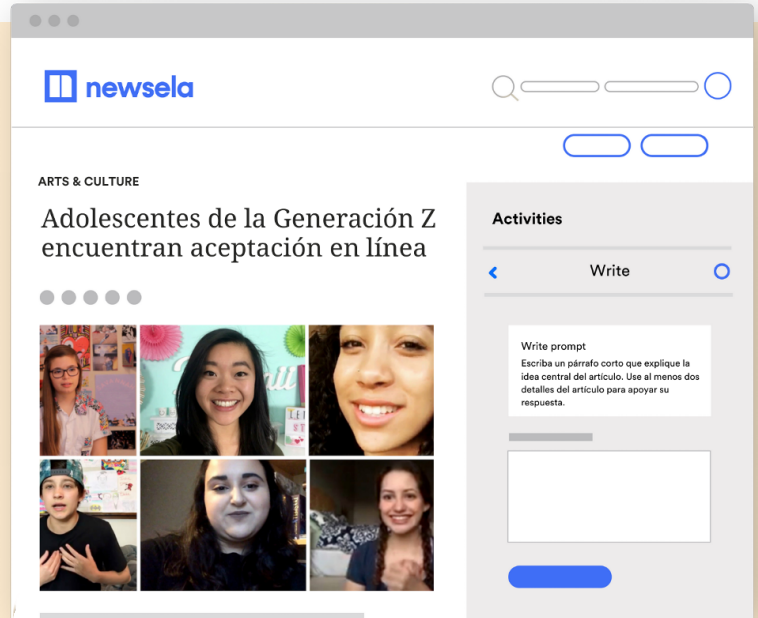


Bilingual Ed and Dual Language Supports

Help teachers expand students' learning experience and engagement

Support emergent bilingual students with ELPS-aligned activities

All Newsela texts come with built-in instructional activities that Bilingual Education and Dual Language teachers can leverage to help meet ELPS and prepare students for TELPAS. With Newsela ELA, the ELAR quiz is TEKS-aligned and leveled, offering teachers real-time data on their students no matter their Lexile. The editable writing prompts enable teachers to adjust the question to flexibly meet the needs of a wide range of emergent bilingual students.



Curriculum Complements can help facilitate planning for teachers, saving time spent looking for resources

Designed to be used alongside core curriculum, Newsela Curriculum Complements add fresh, engaging content to existing materials. Some of our curriculum complements designed exclusively for Texas include articles with activities in both English and Spanish and text sets that list the articles in Spanish upfront, eliminating the need to search for resources.