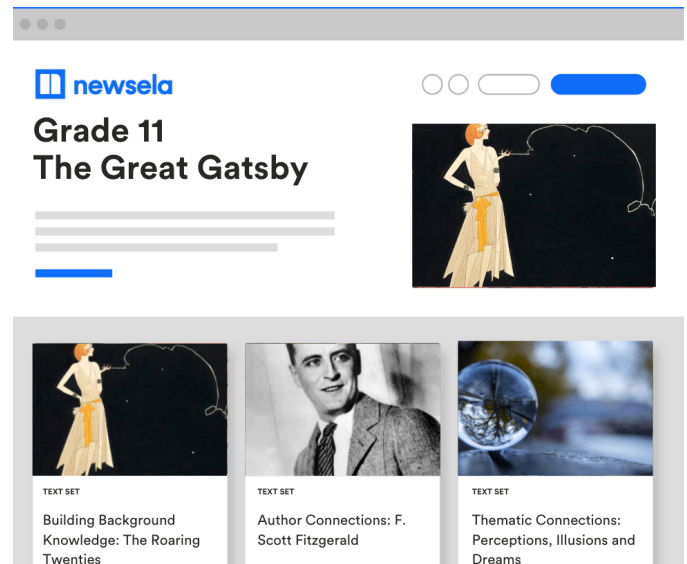


# Curriculum Complement for Odell Education Texas High School Literacy Program\*



## This Curriculum Complement is available with Newsela ELA.

Get the most out of your existing materials by effortlessly adding content that's fresh, engaging, accessible, and organized to work alongside what you're already using.

For Odell Education Texas High School Literacy Program\*, we reviewed the scope and sequence for grades 9-12 and built a resource with Newsela's content that teachers can use directly alongside it.

The Curriculum Complement includes units at each grade level, filled with text sets of engaging, relevant, real-world content that match each Odell Education Texas High School Literacy Program\* unit's topics, themes, and text types. The text sets offer opportunities to deepen students' understanding of the curricular content (like building background knowledge and making topical connections) and support priority skill development.

- The text sets have [TEKS-aligned implementation guides](#) that include: a lesson guide, English Language Learner supports, SEL connections, extension opportunities, and TEKS and ELPS alignment.
- Each lesson's TEKS were chosen from the [Texas Readiness Standards](#).
- English language learners benefit from the menu of scaffolds provided at the lesson and unit level. [Texas Connections and texts available in Spanish](#) are highlighted within applicable lessons.

### With the Odell Education Texas High School Literacy Program\* Curriculum Complement, schools and districts:

- **Get even more out of existing investments**
- **Add relevance or rigor to any lesson**
- **Provide more reading choice for students**
- **Save teachers' time finding, vetting, & aligning content**
- **Ensure every student can access background knowledge and discussions**

\*All provider names and trademarks are property of their respective owners. Providers not explicitly listed as collaborators or partners were not involved in the development of Newsela Curriculum Complements. Inclusion does not indicate the company's approval or endorsement of the Curriculum Complement(s).

# Sample Newsela texts for Odell Education Texas High School Literacy Program\*

## Ninth Grade

### Foundation Unit: What Does It Mean to Live in Texas?

Students practice close reading skills as they learn more about the geography and history that contribute to Texas' identity and explore what it means to live here. Students will use text evidence to explain how these factors influence the economy, education and culture in our state.



#### GEOGRAPHY

Each diverse geographic region of Texas stretches hundreds of miles



#### U.S. HISTORY

Universities in Texas

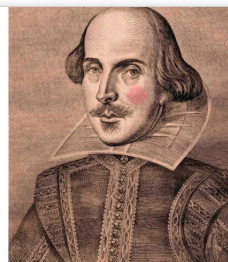


#### OPINION

What Selena and legacy tell about Latinx identity today

### Romeo & Juliet

In this Unit, students will explore connections between Shakespeare's Romeo & Juliet and a variety of topics, themes and genres. They will apply close reading skills to practice analysis and construct comprehensive written responses.



#### ARTS & CULTURE

Meet William Shakespeare



#### ARTS & CULTURE

How to deal with the death of a loved one

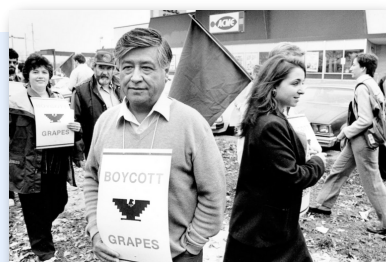


#### ARTS

Learning Shakespeare writing sonnets youth prison

### 9th Grade Application Unit

In this Unit, students will learn the strategies for writing effective introductions and conclusions that appeal to an intended audience. Students will read texts that provide strong examples of these elements, and apply their understanding to writing and revising their own drafts.



#### U.S. HISTORY

Famous Speeches: Cesar Chavez's 1984 Address to the Commonwealth Club



#### OPINION

Opinion: Don't know how to save the planet? This is what you can do



#### ARTS & CULTURE

An essay revision checklist

\*All provider names and trademarks are property of their respective owners. Providers not explicitly listed as collaborators or partners were not involved in the development of Newsela Curriculum Complements. Inclusion does not indicate the company's approval or endorsement of the Curriculum Complement(s).



# Sample Newsela texts for Odell Education Texas High School Literacy Program\*

## Tenth Grade

### Foundation Unit: Who Changes the World?

In this Unit, students will practice analyzing texts in a variety of ways, including evaluating their structures, drawing inferences and making connections. Students will read about how people are working to create social change and learn more about who these individuals are.



ARTS & CULTURE

Listening to the other side



ARTS & CULTURE

Interview with actress  
Laverne Cox



KIDS

Boat trip: Greta  
Thunberg, climate  
activist, plans  
to UN summit

### Alexander Hamilton

Students will build background knowledge and read a range of texts that enhance their understanding of the context behind the musical Hamilton. They will examine the real-world connections, literary elements and thematic ideas that lend meaning to the play's characterization, setting and plot.



ARTS

"Hamilton" is going to be a  
movie featuring the original  
Broadway cast



GOVERNMENT & ECONOMICS

Primary Sources:  
Alexander Hamilton's  
Federalist Papers No. 70



U.S. HISTORY

The New Nation  
Understanding  
Burr-Hamilton

### Antigone

Settlers in the thirteen British colonies established community, government, and relationships with Native Americans. Students will learn about the characteristics and people of the English colonies and their legacy today.



ARTS & CULTURE

What are myths?



ARTS & CULTURE

In many cultures, food is a  
way of celebrating those you  
have lost



FICTION

A Pair of  
Silk  
Stockings

\*All provider names and trademarks are property of their respective owners. Providers not explicitly listed as collaborators or partners were not involved in the development of Newsela Curriculum Complements. Inclusion does not indicate the company's approval or endorsement of the Curriculum Complement(s).

# Sample Newsela texts for Odell Education Texas High School Literacy Program\*

## Eleventh Grade

### Foundation Unit: How Can I Prepare for Life after High School?

Students will gain an overview of the different opportunities provided by four-year colleges, community colleges, vocational schools and the military. They will practice a variety of reading strategies to gain the information they need to begin thinking and preparing for a future path for life after high school.



#### MONEY

Free college for all is a popular rallying cry, but is it realistic?



#### ARTS & CULTURE

How to write a personal essay for college



#### GOVERNMENT & ECONOMICS

Issue Overview: College education



### The Great Gatsby

Students will read about America in the 1920s and the factors that influenced F. Scott Fitzgerald's writing that develop background and context for understanding The Great Gatsby. They will make thematic connections between the text and their own experiences to understand the novel's depictions of themes related to illusion, race and wealth.



#### U.S. HISTORY

Progressive Era: The Roaring Twenties



#### SCIENCE & MATH

Explainer: What is dreaming?



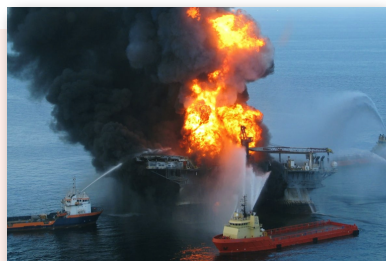
#### ARTS & CULTURE

Authors: F. Scott Fitzgerald



### Friday Night Lights

Students will examine how authors use language and text structures to develop meaning, and will practice summarizing, paraphrasing and making evidence-based inferences about a variety of texts. They will gather contextual knowledge related to H.G. Bissinger's Friday Night Lights on topics including the socioeconomic impact of oil booms on Texas towns, race and gender in football and current events affecting the sport's future.



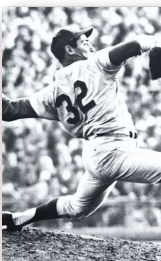
#### GOVERNMENT & ECONOMICS

The history of petroleum industry



#### SPORTS

Homecoming queen swaps tiara for football helmet, wins game



#### U.S. HISTORY

Essay: Why sport history? American history



\*All provider names and trademarks are property of their respective owners. Providers not explicitly listed as collaborators or partners were not involved in the development of Newsela Curriculum Complements. Inclusion does not indicate the company's approval or endorsement of the Curriculum Complement(s).

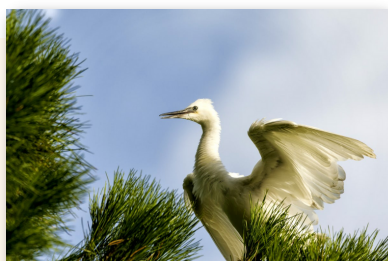


# Sample Newsela texts for Odell Education Texas High School Literacy Program\*

## Twelfth Grade

### Foundation Unit: What Does It Mean to Live a Life Well-Lived?

Students will consider different ideas about what it means to live a life well-lived. As they examine informational texts, fiction and poetry on a variety of themes, students will begin to form their own answers to this question.



FICTION

The White Heron



ARTS & CULTURE

Being kind to yourself is the best way to help achieve your goals



KIDS

"If": A poem by Rudyard Kipling

### In the Time of Butterflies

Students will gather background knowledge and make connections to the setting, themes, and events in Julia Alvarez's novel, *In the Time of the Butterflies*. By closely studying the way authors use language and develop themes, students will build understanding to draw conclusions about the nature of revolution and what it means to be a revolutionary.



WORLD HISTORY

The Trujillo dictatorship in the Dominican Republic



FICTION

"Songs for the People": A poem by Frances Ellen Watkins Harper

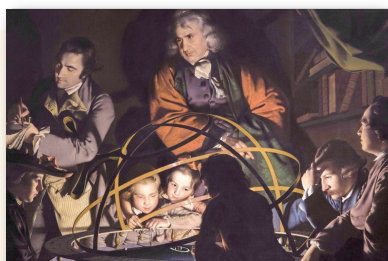


GEOGRAPHY

The Arab Spring

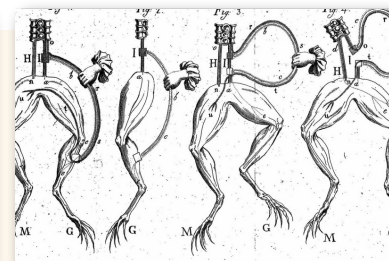
### Frankenstein

Students will gain context for the intellectual setting and personal experiences that inspired Mary Shelley to write *Frankenstein*, then read a variety of fiction and nonfiction with thematic connections to the novel. Students will practice close-reading skills to identify and analyze how writers use craft and structure to develop key ideas.



ARTS & CULTURE

The Age of Enlightenment



ARTS & CULTURE

The real electric "Frankenstein" experiments of the 1800s



SCIENCE

Loneliness in our brains craves people

\*All provider names and trademarks are property of their respective owners. Providers not explicitly listed as collaborators or partners were not involved in the development of Newsela Curriculum Complements. Inclusion does not indicate the company's approval or endorsement of the Curriculum Complement(s).