

Slide


Slide 1: Welcome



Talk Track: Objective Narrative Transition

Welcome to our session. Today I'll share the ways teachers frequently use Newsela in their classrooms, and show you how to find and use a Newsela article. Let's get started!

Slide 2: Reflection

 **newsela**

INTRODUCTION: REFLECTION

Consider the last time you read.

- Did you scan? Did you read closely?
- What knowledge and connections did you bring to the text?
- Was your reading experience different or similar to your students' typical reading experiences? How?

To focus our minds on our learning take a minute and read this slide. Then reflect on your reading and react in the chat.

Facilitator will read two responses and connect them to either what participants will learn about Newsela in this session or how it is connected to future sessions on literacy skills, building background knowledge and diverse perspectives. Then, they'll transition using a teachers comment to connect to why teachers love Newsela.

Let's build on these ideas in the next slide.

Slide 3: Key Benefits

The screenshot shows a slide with the Newsela logo in the top left and the text 'INTRODUCTION: EXPLORE OUR KEY BENEFITS' in the top right. Below the logo is the heading 'Here's why you (and your students) will love Newsela content'. There are four white boxes, each with a blue circular icon and a title. The first box has a book icon and is titled 'Depth & Breadth' with the text 'Covers endless curricular and high-interest topics'. The second box has a lightning bolt icon and is titled 'Relevance' with the text 'Responds to the real world and students' lived experiences'. The third box has a gear icon and is titled 'Differentiation & Scaffolding' with the text 'Adapts to individual student's learning needs'. The fourth box has a clipboard icon and is titled 'Focus on Skills' with the text 'Provides opportunities to practice key skills & critical thinking'.

You have a lot of options for finding content to use in class. So what makes Newsela unique?

With Newsela, you have a content platform that provides content depth and breadth, relevance, meaningful differentiation, and embedded activities that are rooted in learning science to promote key skills.

Newsela's vast standards-aligned content library, differentiated at five reading levels with scaffolding tools and embedded activities, makes it possible for teachers to meet students where they are and quickly build the skills and knowledge they need to understand grade-level lessons.

When students can draw personal connections to their classroom materials, they engage more in their learning, participate more in class, and better understand what they read.

Let's look at how teachers use Newsela.

Slide 4: How do teachers use Newsela?

Teachers use Newsela in many different ways. Across subjects, teachers lean on Newsela's differentiated content, student activities, and insights to practice literacy skills, build background knowledge, and bring more perspectives into instruction.

For a lesson on any particular day, they might select a highly relevant, interactive video that will build background knowledge

newsela

INTRODUCTION: HEAR FROM OTHERS

How do teachers use Newsela?

Here's what teachers have to say about teaching with Newsela.

"I always enrich our book studies with nonfiction articles. When we're reading 'Wonder', I use Newsela's collections to find texts on topics like kindness, community, and bullying."

ELA Teacher

"I love using Newsela in social studies for research, discussion starters, and article of the week work. My students highlight and annotate to engage with the text."

Social Studies Teacher

"I'm using Newsela to introduce students to chemistry. Students read for understanding by highlighting and compiling information into a research paragraph to support our experiments."

Science Teacher

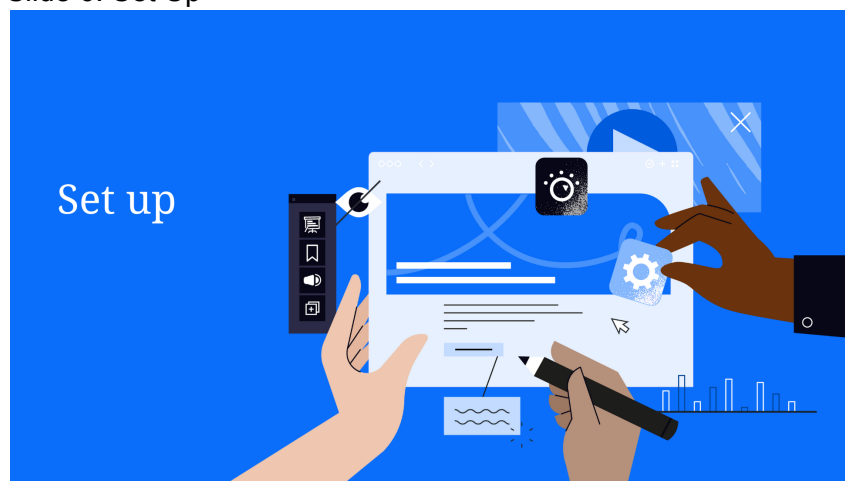
for their unit of study and also help them understand if students can identify the main idea.

Let's look at some examples shared from our Newsela community about how teachers are incorporating Newsela into their instruction in simple ways:

- In ELA, teachers often use our Novel studies to connect to themes present in the books their students read to make learning relevant and build background knowledge.
- In Social Studies, many teachers use Newsela to spark discussion and build content knowledge on a weekly basis.
- In Science, teachers love Newsela for building background knowledge, practicing writing skills and making claims with evidence.

Tell me some ways you've used Newsela with your students.

Slide 6: Set Up



Now to set up. We'll quickly review how you connect your students to Newsela.

Slide 7: Add Students

Adding students to a class on Newsela is important so that you

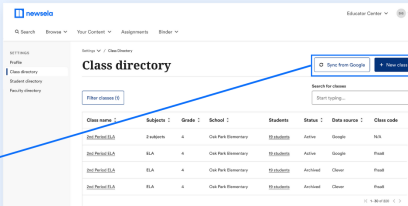


SET UP: CREATE A CLASS

Add students to a Newsela class to make it easier to build routines, give them feedback, and see their progress.

Go to [Settings](#) under your initials in the top right at any time.

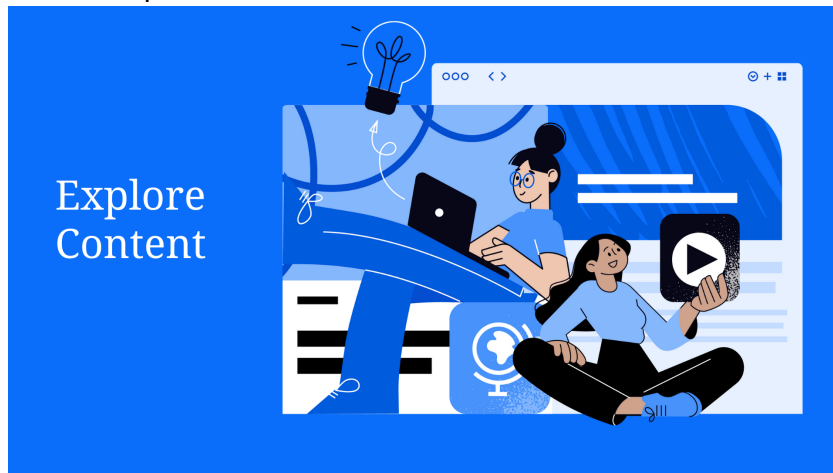
You can sync classes from your LMS, create classes manually, or your district can roster your classes for you.



can get them reading. I'll navigate to my initials in the top right corner of Newsela and select my Settings page. From there, I'll select Class directory. Regardless of how you log into Newsela, you'll see your classes here. You can sync your classes from your LMS, create classes manually using a class code, or your district can roster your classes for you.

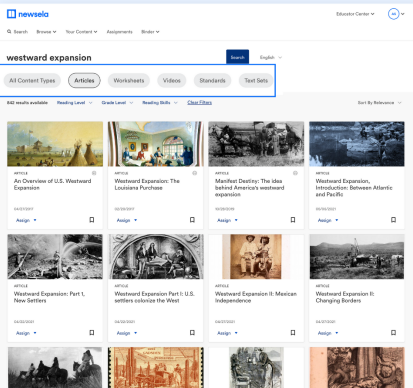
Product Action: Navigate to [Settings page](#) and [Class directory](#)

Slide 8: Explore Content



Now that we reviewed how to connect our students to Newsela, let's find what we want students to read.

Slide 9: Search



newsela EXPLORE CONTENT: FIND A TEXT OR VIDEO

Search for a text or video that connects to your classroom. There are thousands to choose from.

TIP
Don't forget to filter! These help you find content by type, grade, skill, Spanish/English, and more.

Then, preview the content before sharing with students.

The screenshot shows a search for 'westward expansion' with filters for 'Articles', 'Worksheets', 'Videos', 'Standards', and 'Text Sets'. The results are sorted by relevance and include various articles with thumbnails and titles such as 'An Overview of U.S. Westward Expansion', 'Westward Expansion: The Louisiana Purchase', 'Manifest Destiny: The Idea Behind America's westward expansion', 'Westward Expansion, and Tensions Between Atlantic and Pacific', 'Westward Expansion Part I: New Settlers', 'Westward Expansion Part II: U.S. settlers colonize the West', 'Westward Expansion II: Mexican Independence', and 'Westward Expansion II: Changing Borders'.

Product Action: [Hover on homepage](#), then [search for a topic](#), [use one filter](#), [select text](#), and [view then save](#).

You'll find recently published news content, and more, on your homepage. If you use Newsela Lite, this is where you'll find the articles you currently have access to.

To explore other amazing content on Newsela, use search. You can search and save content to prepare for your upcoming week of instruction.

I want to find a text to grab students' attention and connect to their lives so that I can learn more about my middle schoolers in the beginning of the school year. Let's search by middle school to find a high interest topic, and filter by articles. This article looks like a good fit.

Slide 10: Share Content

Now I need to decide how I'll share this content based on my goals for instruction.

I can assign it directly to students enrolled in my class so they can read on their devices. With this option, I can add Newsela activities and see students' progress in my binder.

I can also print the text and the quiz and share a paper version with students.

Or, I can use present mode to project parts of a text or read as a whole group.



ENHANCE INSTRUCTION: ADD ACTIVITIES

To build engaging literacy routines, add an activity to your assignment.

Annotations

Highlighting feature enables you to embed questions, add context or background knowledge, and more.

Writing prompts

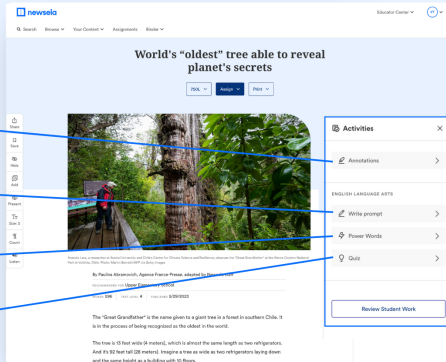
Opportunities to respond in writing, use Newsela's prompts or write your own

Power Words (ELA only)

Vocabulary support with in-context definitions a Tier II vocabulary words and connected activities.

Quizzes

Quick assessments that check for student understanding while promoting literacy skills



[Product Action Navigate to article page](#)

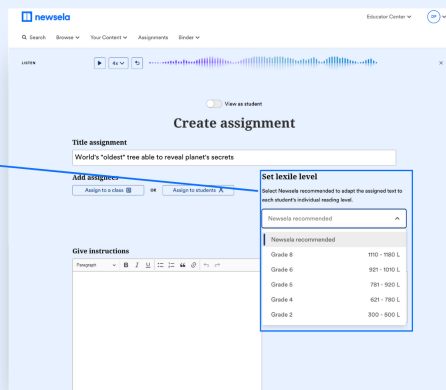
Slide 11: Assign content



EXPLORE CONTENT: SET THE READING LEVEL

When creating assignments, set the reading level for students.

If you choose not to lock the level, each student will automatically see the text at a level that is accessible to them, and can change the reading level.



[Product Action Navigate to assign page](#)

Let's assign a text.

First, you'll want to determine what to call the assignment to grab students attention and connect back to your lesson objective.

Then, write instructions so they know what you expect before, during and after reading.

You can set the reading level and lock it, or let Newsela set it automatically at each student's reading level. If your focus is getting students to read and develop skills at grade level, using the level locking ensures your students get that practice. Use the Newsela recommended level as a way to help students work up to grade-level tasks..

From there, schedule when this assignment should be sent to students and click assign.

Slide 12: Instruction



Now that we've reviewed how to make your first assignment this school year, let's think about how you could leverage Newsela to differentiate, engage and assess your students.

Slide 13: Reading levels

A screenshot of the Newsela website. The top navigation bar includes the Newsela logo and the text "ENHANCE INSTRUCTION: SUPPORT STUDENTS". The main content area features an article titled "World's 'oldest' tree able to reveal planet's secrets". A dropdown menu is open over the article, showing reading level options: "MAX", "ADOL", "STIL", "ADOL", and "ADOL". To the left of the article, there is a sidebar with navigation icons. Below the article, there is a "Did you know?" section with a blue background and white text.

Support and grow every learner with leveled texts

After reading approximately five articles and completing quizzes, students will begin receiving articles at their own reading level. You always have the option to set the reading level for your students.

TIP

For your first assignments, assign articles related to the interests of your students. Engaging content will help them more quickly find their reading level and come to love reading on Newsela.

Did you know?

Newsela can use NWEA MAP Growth data to set reading levels. Just ask your administrator to share MAP Growth data with Newsela.

Newsela is adaptive, meaning as students read and complete quizzes, the platform automatically learns their reading level and can show them content at that level.

Many teachers have found success allowing students to get independent reading practice at their individual reading level, and then will level lock at grade level—and further scaffold the texts and provide guidance—to provide an appropriate challenge.

Initially, students see content at the grade level of their class. The more quizzes students take, the more accurate the level becomes. Students will automatically see content at that level, unless teachers lock the level of assignments.

The MAX level of the article will be the original version of the text. Then you'll find additional adapted levels to support student access. These adapted levels were written by humans taking

Product Action Navigate to reading levels on the article page

care to preserve the spirit of the original text. You'll find the grade-level equivalent just below the author's name, labeled as "text level."

We recommend assigning texts in the beginning of the year that are related to students' interests and provide students with low stakes reading experiences so that you can get to know them as readers.

Slide 14: Adding Activities

newsela ENHANCE INSTRUCTION: ADD ACTIVITIES

To build engaging literacy routines, add an activity to your assignment.

Annotations
Highlighting feature enables you to embed questions, add context or background knowledge, and more.

Writing prompts
Opportunities to respond in writing, use Newsela's prompts or write your own

Power Words (ELA only)
Vocabulary support with in-context definitions a Tier II vocabulary words and connected activities.

Quizzes
Quick assessments that check for student understanding while promoting literacy skills

Activities

- Annotations
- Write prompt
- Power Words
- Quiz

Review Student Work

Student activities are found in the right-hand panel. Students and teachers can activate the Annotation tool by selecting any word, phrase, or sentence in the text.

Every text has a four-question multiple choice quiz that is differentiated by text level and aligned to ELA standards.

Customizable write prompts also provide students with writing and critical thinking practice.

Power Words are available on some texts for teachers with Newsela ELA. This tool helps to support vocabulary development.

Product Action Navigate to activities panel in article

Slide 15: Scaffold learning

In addition to differentiated texts, Newsela provides a range of other scaffolding tools. Here are three favorites.

The read aloud tool located on the left side of the article page gives students the flexibility to listen to the text before reading or during reading to develop their understanding.



ENHANCE INSTRUCTION: SCAFFOLD LEARNING

Help learners work on grade-level and take on more challenging texts.

Here are three of the many ways you can scaffold for your students.

Read aloud

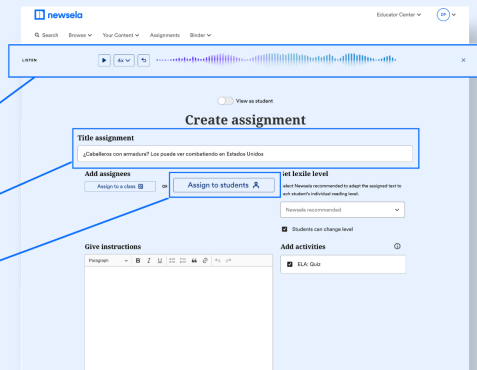
Word-by-word highlighting that can be played and paused, in both English and Spanish.

Spanish

Thousands of expertly translated texts with quizzes and write prompts - helpful for English Learners

Small group assignments

Simple way to differentiate for individuals or specific groups of students



8% of students in the United States speak Spanish as their home language. Newsela publishes many of its texts in both English and Spanish, and the Spanish versions provide an effective scaffold for Spanish-speaking English language learners.

Students have different needs, especially as they develop as readers. Newsela allows you to create assignments for the whole class, or for small groups or individuals to further differentiate instruction or create distinct learning experiences for students.

**Product Action Navigate to article page:
Review read aloud tool, the Spanish tool, and the small group assignment page**

Slide 16: Review Student work



ENHANCE INSTRUCTION: REVIEW STUDENT WORK

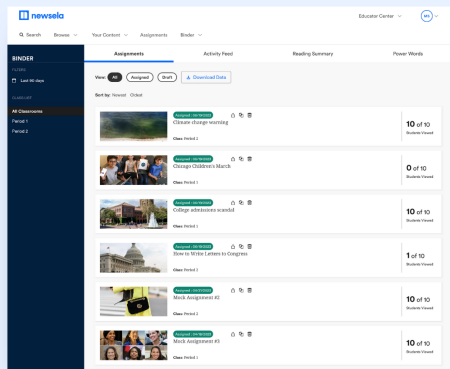
You can track completed student work in the binder or directly within any text you've assigned.

Assignments tab

Summary of class activity for a given assignment. Click into an assignment to see class and individual student stats.

Reading summary

Data on students' reading levels, number of texts viewed, & averages for various activities.



Real-time updates are available to students, teachers and administrators in the binder.

The binder tracks student activity and progress to provide you with the insights you need to understand where students are in their learning and make informed instructional decisions.

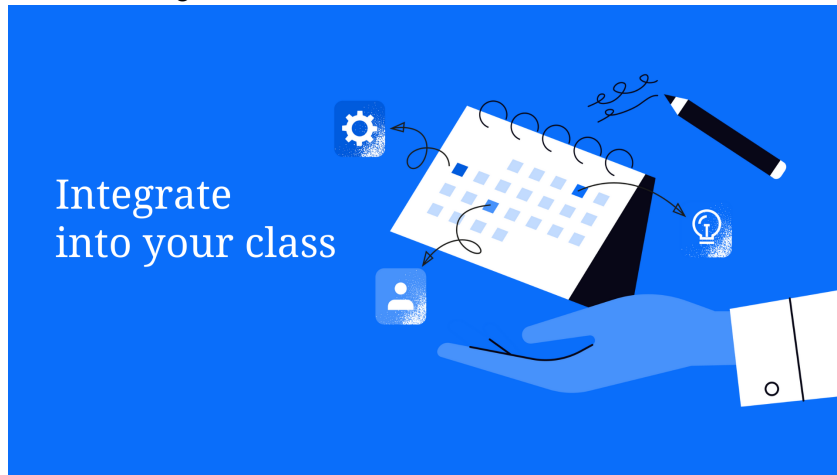
View actions students have taken on their assignments in the assignments tab. You can preview the entire class' annotations, quiz scores, and write prompts on a given level of text and provide timely feedback as well as plan for ongoing instruction.

View student overall progress under the reading summary tab. Gain insight into student reading levels on Newsela, quiz

[Product Action Navigate to the Binder.](#)

averages and more and see how students are performing on the reading skills assessed by Newsela quizzes. Click on a student's name to see a more detailed report.

Slide 17: Integrate into Instruction



Now that we've reviewed the steps and tools you have to design learning experiences on Newsela, let's think about what this actually looks like in the classroom.

Slide 18: Add Newsela to Your Weekly Routine

As you start to use Newsela with your students, think about your why.

Some teachers use Newsela to introduce new topics. They might leverage accessible text or a video to build background knowledge.

Some teachers use Newsela to model, teach and provide practice for students with literacy skills. This might look like using present mode to review a reading strategy and then assigning the text so that students can practice that strategy independently.

Some teachers have students log into Newsela and read independently. When they find something to read, the text



INTEGRATE INTO CLASS: WEEKLY EXAMPLE PLAN

Add Newsela to your weekly routine

Monday	Tuesday	Wednesday	Thursday	Friday
<i>Introduce new topic</i>		<i>Practice a skill or reteach</i>		<i>Independent Reading</i>
Text or video can give students a window into your unit of study while building background knowledge		Model a literacy skill or give students extra practice		Give your students opportunities to read about what they care about

Product Action Navigate to search to show a video, model present mode and assignment with an article, and show the student view for independent reading.

Slide 20: Appendix

includes all of the activities and scaffolds they need to feel supported and challenged.

Facilitator goes live in product

Use the chat and tell me how you plan to use Newsela in your classroom.

Before we end, let's explore the additional resources you have available to you as you use Newsela in your classroom this year.