

Getting Started with Newsela PRO:

School & District Implementation Guide

Set up PRO

Designate a coordinator who will

- Facilitate and support your PRO rollout with teachers.
- Receive additional support and communication from Newsela to help with implementation.

Determine [sign-in method](#)

- Standard sign-in requires only an email and a password.
- We **integrate** with Clever, Canvas, Google, Microsoft, and Classlink for quick sign-on and no password mishaps.

Ensure your LMS is configured to include Newsela, if you use one.

- Communicate that all teachers and students should access Newsela in this manner.



Learn PRO

- Review our [welcome video](#)
- Start the year with **professional development** to support your teachers' understanding of what they can do with Newsela. Have them view this checklist and the [Teacher Learning Hub](#) for self-guided learning.

Set goals for Newsela use

- We recommend that students read **twice a week** on Newsela to support reading growth.
- Communicate your expectations with your faculty.



Using your technology with Newsela

One to One Devices

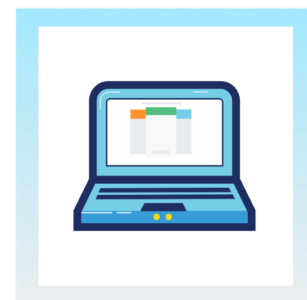
- When students all have a device, they can complete quizzes, write prompts, and annotations simultaneously.

Varied Technology Settings

- With access to a media center, tech station, or classroom computer, you can use Newsela for projects, center activities, and discussions.

On the Go

- Students can download the Newsela App to use on their smartphones or iPads. The app even functions without Wi-Fi so students can complete articles wherever they are.



The Power of PRO

Leveled Texts

All articles have been written on five levels, so every student can access information on the best level for them.

Reading Insights

Actionable metrics for leaders and teachers allow you to see where your students are, even on specific reading standards.

Annotations

Make sure that students are reading closely and with purpose by posing questions for your students to answer as they read.

Assign Virtually

Customizable instructions allow teachers to better integrate our articles with their lesson plans.

Lesson Sparks

Activities created by teachers, for teachers for use in a variety of classrooms.

Write Prompts

Customizable write prompts help teachers gain a sense of how well their students understood an article and its application to their classroom.

Discover reading insights with **the binder**



With Newsela PRO, the Binder lets teachers and administrators spot performance trends in real time. Know whether students, in every classroom and subject, understand their reading and where they stand to grow. A study shows that students who read two articles on Newsela a week see 2x reading growth.

Newsela Checklist for School and District Leaders

Suggested Timeline	Task	Complete
First 30–60 Days	Designate a Newsela coordinator for your school and share them with Newsela by completing this form .	
	Decide if you'll use an integration , like Google or Clever, or a Newsela username and rostering.	
	Ensure that all faculty sign up for Newsela PRO and send them the Checklist for Teachers and Classrooms .	
	Check out which teachers are registered at your school in the Faculty tab and remind others to register.	
	Set school-wide goals and share them with faculty to improve literacy gains.	
	Share how your school will use Newsela in classrooms and at home with parents—your best allies in at-home reading.	
Middle of the Year	Meet with teachers or allow professional development time to discuss usage, progress, and classroom-support needs.	
	Utilize Newsela's Teacher Learning Hub , which includes webinars, videos, and support pages, and share faculty.	
	Monitor how students and teachers are using Newsela with your school binder . Present certificates to those who are meeting and exceeding your goals.	
	Send insights about student engagement with nonfiction texts to their families throughout the year.	
End of the Year	Plan for next year with Newsela by offering faculty time to update lessons, explore new content, and find new resources.	
	Keep students reading throughout the summer with a PRO Summer Reading Program.	
	Reflect on your school's Newsela goals and celebrate your success. Award certificates to students and teachers who have demonstrated increased engagement or creative classroom practices.	

Newsela Checklist for Teachers and Classrooms

Suggested Timeline	Task	Complete
First 30–60 Days	Register for an educator account or log in to see what's new.	
	Create classes and add your students, either on Newsela or with an integration (like Google, Clever, or Canvas) determined by your school or district.	
	Find relevant content for your classroom using the search bar or Library, News, or Text Sets tabs.	
	Check out what other teachers are registered at your school in the Faculty tab . Ask veteran Newsela teachers for assistance or inspiration and invite a teacher missing from the list to register.	
	Assign an article to your class, including instructions for which activities you'd like students to complete during and after reading.	
	Help improve students' literacy skills by ensuring your students read at least two articles on Newsela every week.	
Middle of the Year	Use a Lesson Spark to cultivate close reading and start classroom conversations.	
	Monitor student work and engagement by checking your Binder .	
	Check out the Teacher Learning Hub for professional development webinars on specialized topics to support your classroom.	
	Conference with your students about their reading successes and set goals for growth.	
	Share insights about student engagement with nonfiction with their families throughout the year.	
End of the Year	Celebrate growth and engagement with students. Present certificates that honor their accomplishments this year.	
	Plan for next school year using the Newsela resources you've curated this year. Remember to check back for new articles, since new ones are added daily.	
	Keep students reading throughout the summer with a PRO Summer Reading Program.	