

# What is the CLSD grant and what does it mean for you?



The Comprehensive Literacy State Development (CLSD) grant, offered by the U.S. Department of Education, provides competitive funding to State Education Agencies (SEA) with the goal of **enhancing literacy outcomes for children from birth through grade 12**, with a particular emphasis on supporting disadvantaged children.

The grant aims to improve literacy instruction, close achievement gaps, and strengthen the capacity of educators and stakeholders. To achieve these objectives, **SEAs must use the funds for evidence-based literacy programs that align closely with the science of reading**, ensuring all children can access a high-quality education.

The following 23 states were awarded grants in the most recent round of funding: [Alaska](#), [California](#), [Colorado](#), [Washington DC](#), [Hawaii](#), [Iowa](#), [Kentucky](#), [Louisiana](#), [Massachusetts](#), [Maryland](#), [Missouri](#), [Montana](#), [North Dakota](#), [Nebraska](#), [New Jersey](#), [New Mexico](#), [Ohio](#), [Oklahoma](#), [Oregon](#), [Rhode Island](#), [South Dakota](#), [Tennessee](#), [Virginia](#).

## Funding Guidelines

The 2024 CLSD funding level is approximately **\$149 million**. States must grant at least 95% to Local Education Agencies (LEA) in five-year grants. LEAs are expected to open applications for funding and typically award just a few select districts. Be sure to keep in touch with your district's Federal Programs Manager or Local Education Agency to get the latest updates on application timing. The funds will be allocated according to these guidelines:

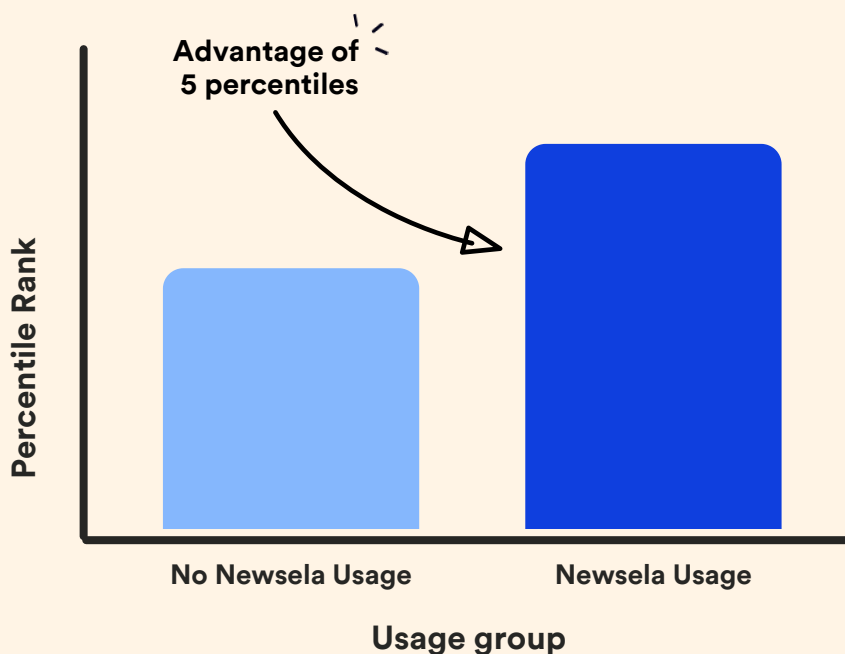
- **15%** to early literacy for children from birth through age 5
- **40%** for students in grades K-5
- **40%** for students in grades 6-12, with an even distribution between middle and high schools

# Newsela products are eligible for CLSD funding

Newsela creates meaningful learning opportunities for all students, regardless of their backgrounds or abilities. Our products meet the required tiers of evidence for the Comprehensive Literacy State Development program.



- Students who use Newsela ELA see the equivalent of **4 additional months of literacy growth** by the end of the school year.
- Students read Newsela texts an average of **1-2 times per week**, often with the associated quiz.
- Results appeared on **multiple state tests**, and both the **i-Ready Reading Diagnostic** and **NWEA’s MAP Growth**.
- Results were robust across student **race, ethnicity, gender, and language status**.
- All studies referenced meet **ESSA Tier II / MODERATE** requirements for evidence.



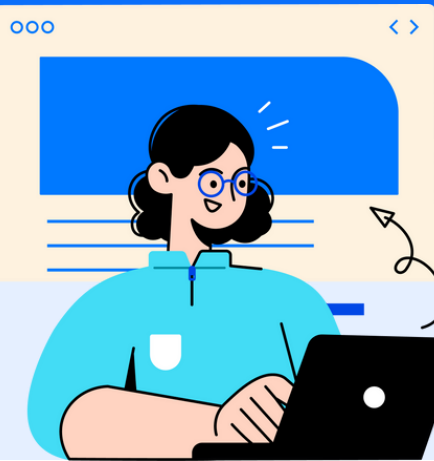
Scan the QR code to learn more about research and efficacy at Newsela



# How Newsela aligns with NJ's CLSD plan



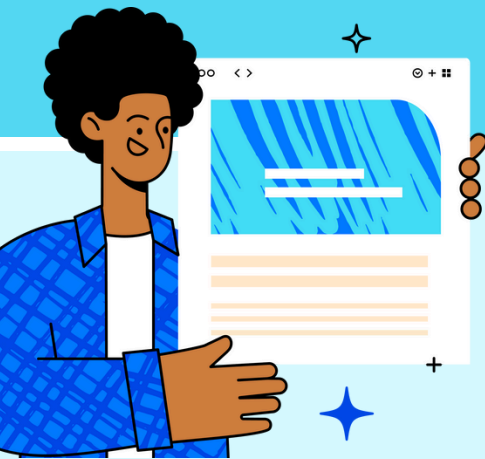
New Jersey has received \$14,766,038 in Year One to focus on closing literacy achievement gaps, promoting equitable access to high-quality instruction, and providing professional development for educators. Newsela supports NJ students and teachers with these initiatives in three main ways.



## Drive literacy skill building in NJ classrooms

Enhance literacy instruction across all grade levels

Students who read and take quizzes on Newsela ELA 2x per week see 4 additional months of literacy skill growth by the end of the school year. With 2023 NJSLS-ELA aligned multiple choice quizzes and writing prompts, reporting for real-time insights into student performance, and embedded graphic organizers and flexible Formative activities, Newsela ELA allows students to practice literacy skills without sacrificing engagement.



## Build background knowledge

Support developing readings with a robust content library

Building background knowledge is a crucial component of language comprehension. It deepens students' reading abilities and makes literacy skills stick. With over 15,000 authentic texts, Newsela ELA builds the background knowledge necessary for reading comprehension through Novel and Book Studies collections of 450+ of the most commonly taught books and novels, Curriculum Complements to work alongside your existing materials, and Research Projects.



## Drive literacy gains for all students

Close achievement gaps for underrepresented New Jersey students

ESSA Tier II studies show Newsela products accelerate learning across ELA. Students who used Newsela ELA 1-2x per week saw gains of approximately 5 percentiles relative to their peers. This is the equivalent of 3 additional months of literacy growth in ELA. Results were robust across student race, ethnicity, gender, and language status.



Scan this QR code to read the press release from the NJ Department of Education