

# What is the CLSD grant and what does it mean for you?



The Comprehensive Literacy State Development (CLSD) grant, offered by the U.S. Department of Education, provides competitive funding to State Education Agencies (SEA) with the goal of **enhancing literacy outcomes for children from birth through grade 12**, with a particular emphasis on supporting disadvantaged children.

The grant aims to improve literacy instruction, close achievement gaps, and strengthen the capacity of educators and stakeholders. To achieve these objectives, **SEAs must use the funds for evidence-based literacy programs that align closely with the science of reading**, ensuring all children can access a high-quality education.

The following 23 states were awarded grants in the most recent round of funding: [Alaska](#), [California](#), [Colorado](#), [Washington DC](#), [Hawaii](#), [Iowa](#), [Kentucky](#), [Louisiana](#), [Massachusetts](#), [Maryland](#), [Missouri](#), [Montana](#), [North Dakota](#), [Nebraska](#), [New Jersey](#), [New Mexico](#), [Ohio](#), [Oklahoma](#), [Oregon](#), [Rhode Island](#), [South Dakota](#), [Tennessee](#), [Virginia](#).

## Funding Guidelines

The 2024 CLSD funding level is approximately **\$149 million**. States must grant at least 95% to Local Education Agencies (LEA) in five-year grants. LEAs are expected to open applications for funding and typically award just a few select districts. Be sure to keep in touch with your district's Federal Programs Manager or Local Education Agency to get the latest updates on application timing. The funds will be allocated according to these guidelines:

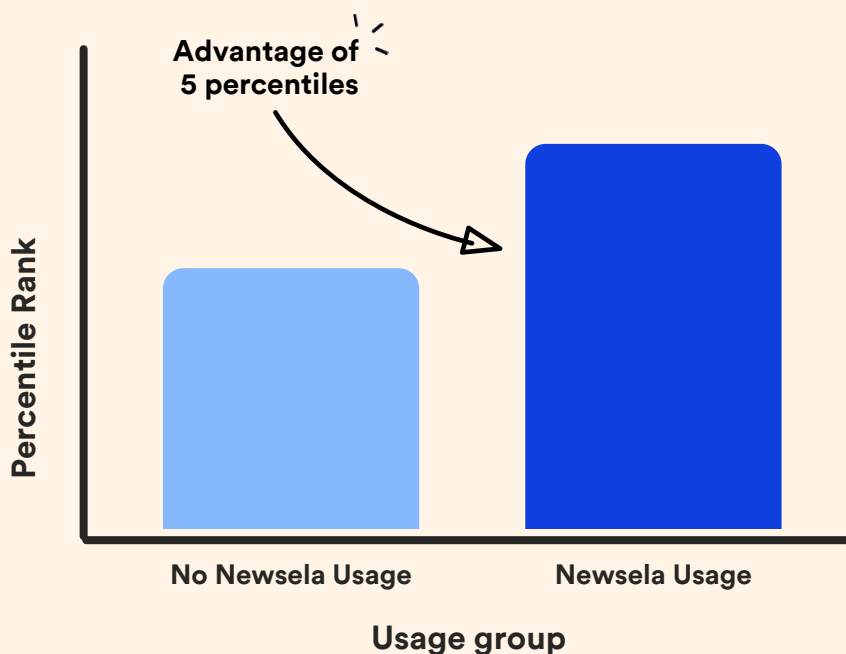
- **15%** to early literacy for children from birth through age 5
- **40%** for students in grades K-5
- **40%** for students in grades 6-12, with an even distribution between middle and high schools

# Newsela products are eligible for CLSD funding

Newsela creates meaningful learning opportunities for all students, regardless of their backgrounds or abilities. Our products meet the required tiers of evidence for the Comprehensive Literacy State Development program.



- Students who use Newsela ELA see the equivalent of **4 additional months of literacy growth** by the end of the school year.
- Students read Newsela texts an average of **1-2 times per week**, often with the associated quiz.
- Results appeared on **multiple state tests**, and both the **i-Ready Reading Diagnostic** and **NWEA’s MAP Growth**.
- Results were robust across student **race, ethnicity, gender, and language status**.
- All studies referenced meet **ESSA Tier II / MODERATE** requirements for evidence.



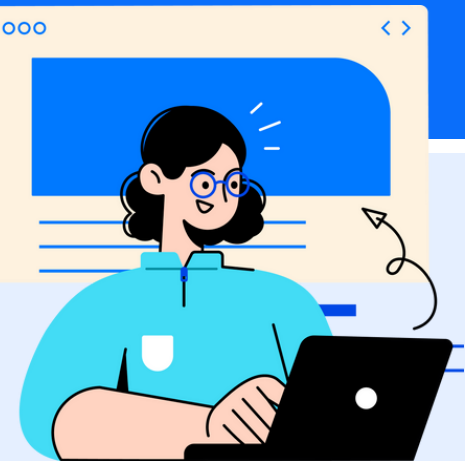
Scan the QR code to learn more about research and efficacy at Newsela



# How Newsela aligns with MA's CLSD plan



Massachusetts has received \$1,776,531 in Year One to expand evidence-based literacy practices for students from pre-K through 12th grade, with a focus on culturally and linguistically sustaining methods. Newsela supports MA students and teachers with these initiatives in three main ways.



## Support key elements of the science of reading

Boost word recognition and language comprehension with high-interest texts

Newsela ELA is designed based on learning science to support key elements of the science of reading, including word recognition skills as well as language comprehension skills, like background knowledge and vocabulary. With 15,000+ high interest texts that support knowledge building, frequent opportunities for formative assessment, and supportive scaffolds ensure teachers can meet every student's unique learning needs.



## Close achievement gaps in MA

Drive literacy growth to promote reaching grade-level literacy benchmarks

Massachusetts aims to increase the number of students reaching grade-level literacy benchmarks. ESSA Tier II studies show Newsela products accelerate learning across ELA. Students who used Newsela ELA 1-2x per week saw gains of approximately 5 percentiles relative to their peers. This is the equivalent of 3 additional months of literacy growth in ELA. Results were robust across student race, ethnicity, gender, and language status.



## Engage with English Language Learners

Support ELLs with culturally and linguistically sustaining practices

Support English Language Learners in reaching and exceeding grade-level standards with Newsela ELA's differentiated, diverse content and activities. In addition to thousands of texts natively translated into Spanish at five reading levels, engage language learners with high-utility vocabulary words that facilitate language acquisition in context, as well as read aloud mode for fluency and proficiency.



Scan this QR code to visit the Massachusetts CLSD webpage